

Board Members



Curtis Dorsch, MD
Primary Care
Chair



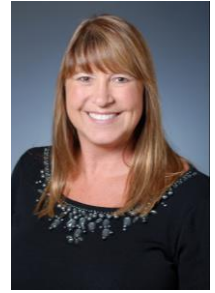
John Webb, MD
At Large
Vice Chair



Robert Prichard, MD
President &
Chief Executive Officer



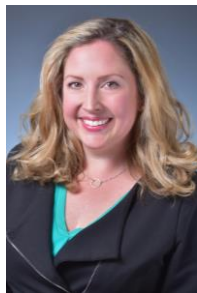
Robert Baker, MD
SEH Board of Trustees
Representative



Lisa Arehart, APRN
Advance Practice
Provider



Patricia Abello, MD
Surgical Specialty



Susan Oakley, MD
At Large



**Chaitanya
Mandapakala, MD**
Medical Specialty



Stacey Bishop, MD
At Large



Gina Grove, MD
At Large



Donald Price, MD
At Large



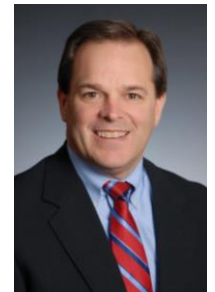
Brian Schack, MD
At Large



Kevin A. Martin, MD
At Large



Thomas C. Colvin
Community Member



Garren Colvin
St. Elizabeth Healthcare
President & Chief
Executive Officer



Lori Ritchey-Baldwin
St. Elizabeth Healthcare
Senior Vice President &
Chief Financial Officer



Larry F. Kendall, MD
St. Elizabeth Healthcare
Senior Vice President &
Chief Medical Officer



P. Gregory Houlihan, MD
Cardiology Liaison



Jacob Bast
Senior Vice President &
Chief Operating Officer
Secretary



Bruce Henley
Senior Vice President &
Chief Financial Officer
Treasurer

Executive Staff